



Xian[®] Network Manager 2005

Monitoring Network Devices with Microsoft Operations Manager is simple!

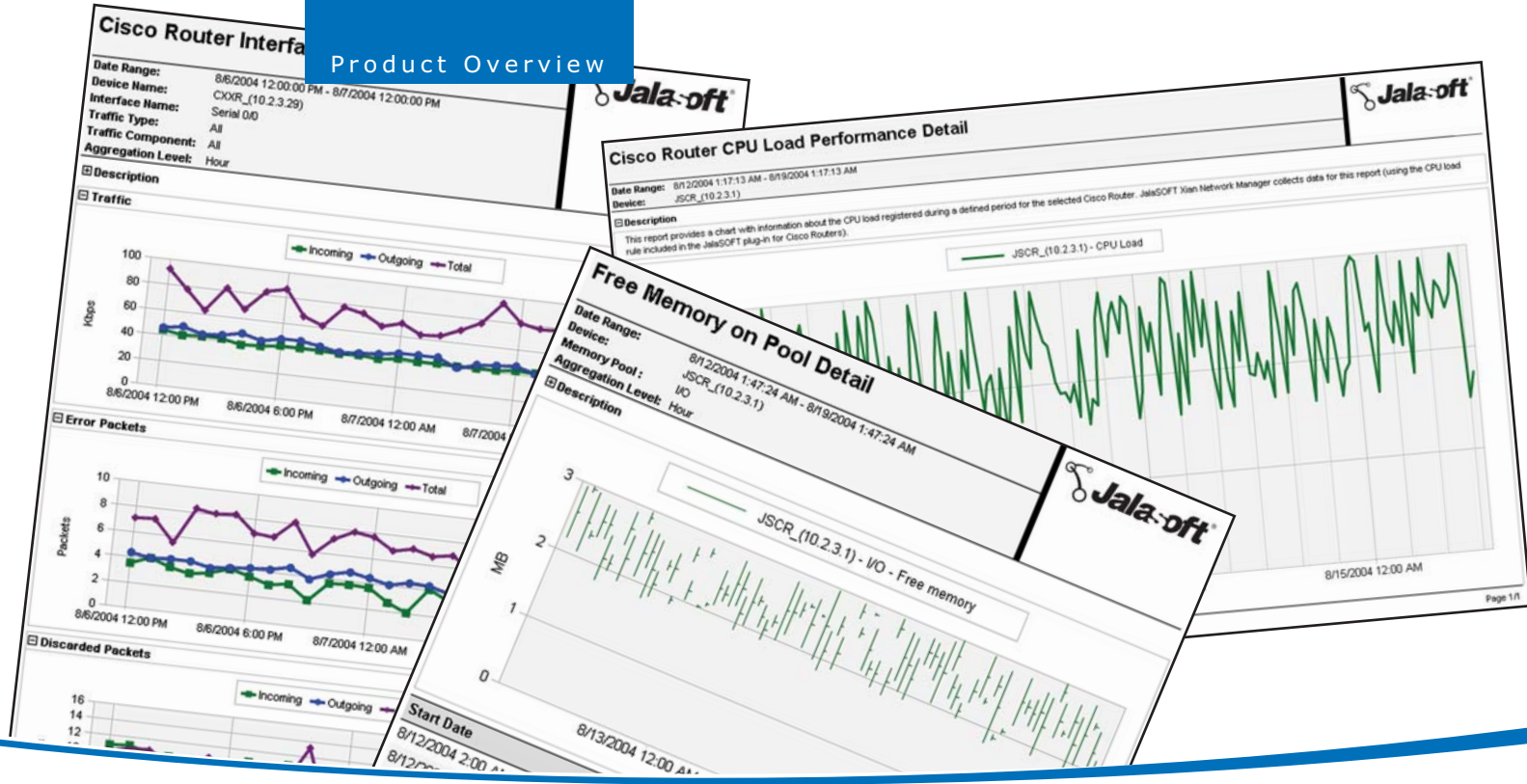
Healthy Network Environments

Businesses - more than ever before - are dependent on technology to sell and deliver goods and services and to communicate with their customers. It follows therefore that a top priority of any business, large or small, is maximizing the reliability, availability, and performance of their IT infrastructure assets. Simply put - to maintain competitiveness, companies need to proactively, not reactively, manage the "health" of their computing environment.

Microsoft Operations Manager (MOM) is Microsoft's comprehensive solution for managing the Microsoft-based components of the computing infrastructure. With MOM 2005, you can manage your Microsoft environment - avoid outages, improve performance, and more quickly correct problems. There's no question that customers who implement MOM improve the ROI they realize from their Microsoft investments. However that's only part of the solution - what about the other components of the computing infrastructure?

Xian Network Manager, not just another Management Pack

Xian 2005 Network Manager is a comprehensive systems management solution-set designed from the ground-up to extend the robust capabilities of MOM to a heterogeneous computing environment. Xian Network Manager is not just another MOM "management pack" or add-on. Xian is an integrated solution that extends the extensive knowledge-based monitoring and management capabilities of MOM to the other critical components of your computing infrastructure. The unique combination of MOM/Xian allows you to manage your Microsoft infrastructure components and your networking and security devices, Unix servers, Unix-based services, uninterruptible power supplies, printers, and print servers all from the same MOM Management Console. The seamless integration of MOM/Xian enables the proactive management of your enterprise-computing environment.



Cross-Platform and Scalable Network Monitoring

Xian 2005 Network Manager is a comprehensive and scalable network monitoring and management solution designed to seamlessly extend the capabilities of Microsoft Operations Manager to a heterogeneous computing environment. Through MOM/Xian, you can monitor and manage the reliability, availability, and performance of all key components of your computing environment – from a single point of management.

The Xian Network Manager solution includes the following key components:

Network Manager Server (NMS) – monitors managed devices and collects critical information by applying device-aware data collection rules. Each NMS can actively monitor up to 250 individual devices in near real-time.

Network Scan Server (NSS) – scans the entire network on a scheduled basis and, based on pre-defined rules, adds new supported devices to Xian, and to MOM.

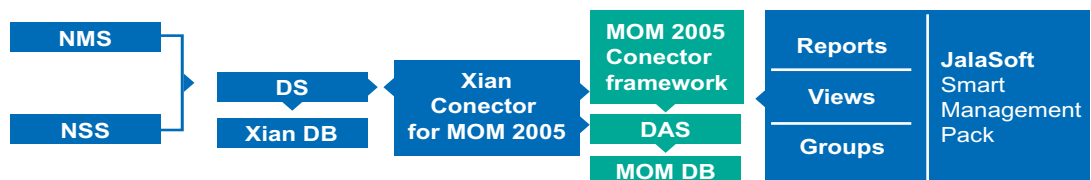
Data Server (DS) – receives all gathered device data, including performance metrics and alerts, from NMS and forwards this information to the Xian Connector for MOM 2005.

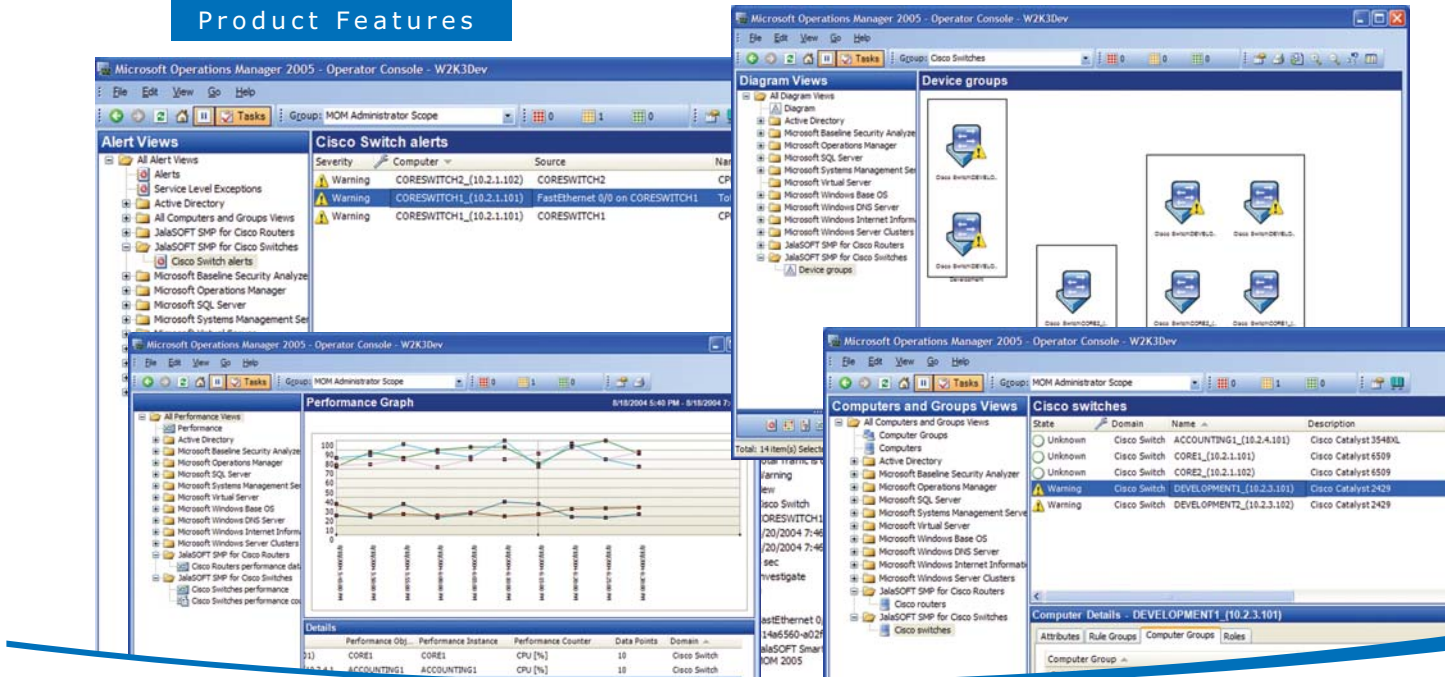
Xian Database – stores information about the installed Xian configuration, including device rules, connectors, active rules, and other relevant information.

Xian Connector for MOM 2005 – relays performance and “health” data for monitored devices to the MOM Connector Framework (MCF), and the MOM Data Access Server (DAS).

Smart Management Packs - provide the intelligence to organize, process, and analyze the information about monitored devices into the views, computer groups, and reporting capabilities of MOM.

The Xian Network Manager solution is licensed based on the number of Xian Network Manager Servers, Smart Management Packs, and Device Licenses required.





Any Device Anywhere

The **Xian Network Manager** can be **scaled** to support any computing environment, including large geographically dispersed enterprises. Xian Network Manager can function in a distributed mode, forwarding only critical information across WAN links to a central Xian/MOM 2005 configuration, or it can be configured to interface with local MOM servers at remote locations. Xian can be tailored to match your computing infrastructure and business requirements.

The Xian Network Manager Server (NMS) uses **Policy templates** to apply pre-configured groups of rules to one or more supported devices. These rules define how Xian intelligently monitors a particular device. Xian 2005 provides basic Policy templates for all supported devices and you can customize these - or create your own - policy templates to satisfy your specific requirements.

The **Xian Network Scan Server** (NSS) scans network segments or subnets for recognized or supported devices using scheduled scanning tasks, which you define. If desired, Xian Network Server can automatically begin monitoring newly discovered devices by applying either basic or customized Policy templates.

Enhance Microsoft Operations Manager Capabilities

Jalasoft's **Smart Management Packs** (SMPs) provide the intelligence to organize, process and analyze the information - gathered by Xian - into the views, computer groups, and reporting capabilities of MOM. SMPs are device-aware and tailored to the monitoring and management requirements of each type of device, and vendor product. All the information of the SMPs is visible in the MOM Operator Console.

The Jalasoft's SMPs also provide a **large set of reports** created to incorporate historical and trend analysis capabilities, based on performance data collected by the most relevant Xian monitoring rules.

Asynchronous Monitoring using a Syslog Server enables Xian to monitor all devices that support syslog and monitor real time events, no thresholds have to be set. The Syslog Server filters all the syslogs and forwards them through Xian to MOM. Users can customize filters so it only forwards an alert to MOM when the syslog message matches a specific content.



Smart Management Packs

The following Smart Management Packs (SMPs) are currently available for Xian Network Manager:

| | |
|------------------------|-------------------|
| Cisco Systems | Routers |
| Cisco Systems | Switches |
| Cisco Systems | VPN Concentrators |
| Cisco Systems | PIX Firewalls |
| Hewlett Packard | ProCurve Switches |
| F5 Networks | Big IP Routers |
| APC | UPS |
| Netscaler | Switches |
| 3COM | Switches |
| Nortel | Switches |
| Linux | Servers |
| Solaris | Servers |

* A generic SMP for basic monitoring of any SNMP-device is also available.

Benefits

Xian Network Manager, deployed in combination with MOM 2005, provides you with an integrated enterprise systems management solution for managing all critical components of your computing environment.

Benefits include:

- "Best-in-Class" monitoring and management of Microsoft components
- Device-aware monitoring and management of all key infrastructure components
- Device discovery and automatic monitoring
- Extensive data collection and reporting, including trend analysis
- "Action-on-Alert" rules for automatic problem resolution
- Quicker "root-cause" analysis (all information in one place, one format)
- Reduced operational and training costs
- "Out of the Box" solution

Contact Info

Jalasoft Corporation
Silicon Valley Headquarters
401 Aldo Ave.
Santa Clara, California 95054
www.Jalasoft.com

Telephone (888) 289-4681
Fax (888) 554-5273
International Fax +1 (408) 577-0119

Sales
sales@Jalasoft.com

Partner Support
partners@Jalasoft.com

Marketing Support
marketing@Jalasoft.com

Technical Support
techsupport@Jalasoft.com

South America Office
Jala Industries S.R.L.
686 Antezana Street
Torre Millenium
Cochabamba – Bolivia

System Requirements:

Minimum requirements to install Xian Network Manager 2005 for Microsoft Operations Manager 2005 are:

- Microsoft Windows Server 2000 SP4 or higher, or Windows Server 2003.
Xian Network Manager server must be run on a separate dedicated server to maintain performance.
- Microsoft Operations Manager 2005 SP1
- Microsoft SQL Server 2000 SP3 or higher, or SQL Server Desktop Engine SP3 or higher.
- Microsoft .NET Framework 1.1.
- MDAC 2.6 or higher.
- SNMP connectivity to all managed devices.
- Microsoft Operations Manager 2005 Connector Framework (MCF).
- Network connectivity between the Xian Server and MOM MCF.
- Microsoft System Service Reporting Services.
Reports included in Jalasoft SMPs require SSRS
- Microsoft Message Queuing

Minimum requirements to install Xian Network Manager 2005 for Microsoft Operations Manager 2005 Workgroup Edition are:

- Microsoft Windows Server 2000 SP4 or higher, or Windows Server 2003.
Xian Network Manager server must be run on a separate dedicated server.
- Microsoft SQL Server 2000 SP3 or higher, or SQL Server Desktop Engine SP3 or higher.
- Microsoft .NET Framework 1.1.
- MDAC 2.6 or higher.
- SNMP connectivity to all managed devices.
- Microsoft Message Queuing