



**The Jalasoft Smart Management Pack for Solaris Servers delivers enterprise ready monitoring of your network environment.** You can monitor your network proactively and be aware of any potential problems that might occur, verify the status of your interfaces and ports, CPU load, traffic and much more.

All information is forwarded efficiently to Microsoft System Center Operations Manager 2007 which creates a one stop interface to see the status of your servers and network infrastructure.

Alerts and performance data are visible in **OpsMgr 2007** and will help you take action and prevent any downtime.

A large number of **pre-defined** rules are provided with the Jalasoft Smart Management Pack for Solaris Servers. Installation is quick and simple and starting to monitor your network is just a matter of dragging and dropping the rules on the specific servers.

This is made possible through the use of Xian Network Manager Io, the platform that runs the Smart Management Pack; no complicated programming or scripting is needed. You can also configure syslog filters to forward syslog alerts to OpsMgr 2007 and monitor single interfaces as an object, simplifying the monitoring of devices with distributed applications.

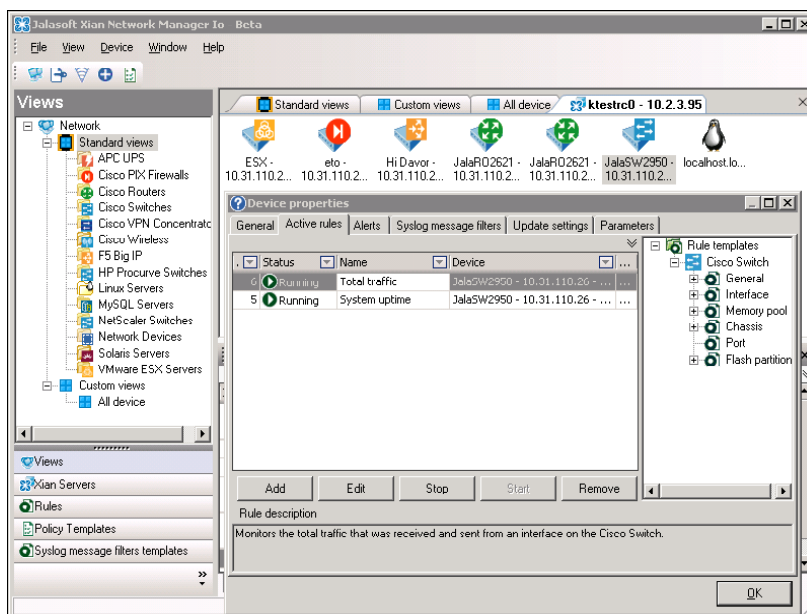
In order to analyze the behavior of the UNIX server for a longer period of time, the Solaris Servers Smart Management Pack has a set of reports that can be ex-

ecuted from the OpsMgr 2007 Reporting Console.

## Rule Parameters

An easy wizard lets you configure the rule parameters. All rules have by default three steps: rule parameters, active rule options and schedule.

### Parameters



You can configure when an alert will be sent to OpsMgr 2007. In many cases, this will be when the value is over or under a certain threshold.

However, for status based rules you can choose to generate an alert when the status changes or when it becomes a certain value (e.g. process status: running, waiting, zombie, or unavailable).

For those rules related to interfaces, it is possible to select the interfaces where you want to apply the rule and define their in-

dividual thresholds. This way you can fine-tune the Xian environment.

### **Active rule options**

The severity level is sent to OpsMgr 2007 when a rule meets the selected criteria. OpsMgr 2007 organizes the alerts by severity. With this option you can predefine each alert with a different level of severity (debug, informational, warning, error or critical), define the collection of performance counters to be used in performance data views or Xian Reports, rename the rule, and enable debug mode for the active rule.

### **Schedule**

You can set the interval between each execution of the rule. This can vary within a range of seconds, minutes or days. When setting this step take into account that a short interval will consume more system resources.

## **Rules**

### **Solaris Servers performance and status rules<sup>1</sup>**

#### **General**

- Device availability
- System uptime
- System usage

#### **Interface**

- Incoming error packets
- Incoming traffic
- Outgoing error packets
- Outgoing traffic
- Total error packets
- Total traffic

#### **File System**

- File system free space
- File system usage

#### **CPU**

- CPU load

#### **Memory**

- Free memory

### **Process**

- Process CPU usage percent
- Process memory usage percent
- Process status

## **Supported Versions**

The Xian Io Smart Management Pack for Solaris Servers supports the following Solaris Servers flavors:

- Solaris 8.0 and above on SPARC platforms

If you want to obtain the updated list of supported systems or if you are interested in adding support for new flavors, please write to [techsupport@jalasoft.com](mailto:techsupport@jalasoft.com).

## **System Requirements**

Minimum requirements to install Xian Io Smart Management Pack for Solaris Servers for Microsoft Operations Manager 2007 are:

- Xian Network Manager Io Platform
- Microsoft Windows Server 2003 SP1 or higher
- Microsoft SQL Server 2000 SP4 or Microsoft SQL Server 2005 SP1 or higher
- Microsoft .NET Framework 3.0.
- MDAC 2.8 SP1 or higher
- SNMP connectivity to all managed devices
- Microsoft System Center Operations Manager 2007
- MS Messaging Queuing
- SQL Server Reporting Services 2005
- Operations Manager Reporting 2007

## **Contact Info**

Jalasoft Corporation  
Houston Headquarters  
1219 Durham  
Houston, Texas 77007  
[www.jalasoft.com](http://www.jalasoft.com)  
Phone 1-(888) 402 6717  
Fax 1-(408) 463-6155

### **Sales**

[sales@jalasoft.com](mailto:sales@jalasoft.com)

### **Partner Support**

[partners@jalasoft.com](mailto:partners@jalasoft.com)

### **Marketing Support**

<sup>1</sup> Some rules may not be applicable to specific versions.